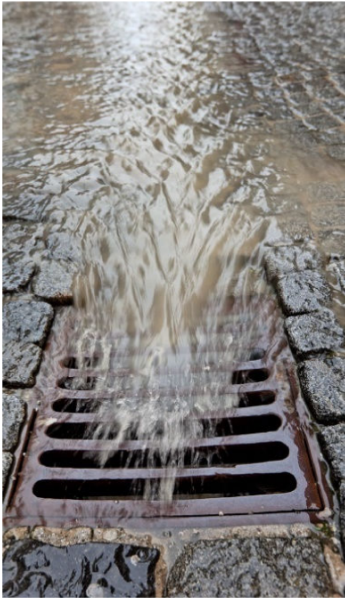


## Stormwater Pollution

Stormwater runoff is generated from rain and snowmelt events that flow over land or impervious surfaces, such as paved streets, parking lots, and building rooftops, and does not soak into the ground. The runoff picks up pollutants like trash, chemicals, oils, and dirt/sediment that can harm our rivers, streams, and lakes.

These pollutants can harm fish and wildlife populations, kill native vegetation, foul drinking water supplies, and make recreational areas unsafe and unpleasant. To reduce and prevent these pollutants, it is important to dispose of yard waste and trash properly and recycle when possible.



City of Arnold Public Works  
2900 Arnold Tenbrook Rd.  
Arnold, MO 63010



Make your home  
the  
**SOLUTION**  
TO STORMWATER  
**POLLUTION!**

*An Arnold resident's guide to yard waste  
and recycling*

## How to Handle Waste



**Clean Water in our streams, rivers & lakes is all our responsibility and we need to work together to build awareness of water quality problems and solutions.**



*To report a storm water issue  
or  
For more information please contact:*

**City of Arnold Public Works**  
2900 Arnold Tenbrook Rd.  
Arnold, MO 63010  
(636) 282-2386

## Yard Waste

Yard clippings and waste can wash into storm drains and contribute nutrients and organic matter to streams. Other yard waste such as fertilizers and pesticides can wash off and pollute streams.

Steps to avoid yard waste polluting streams include:

- Compost or mulch yard waste including grass clippings, leaves, branches, etc.
- Cover piles of dirt or mulch being used for landscaping
- Use pesticides, herbicides, and fertilizers sparingly and only as directed
- Keep fertilizers off paved surfaces by sweeping it back onto the lawn
- Sweep sidewalks and driveways instead of hosing them off

Brush drop off events at Arnold Park will be held on Oct. 29<sup>th</sup> & Nov. 5<sup>th</sup> from 8am to 1pm. Limbs must be 6" diameter or smaller. No leaves accepted. Please refer to the City's calendar at [www.arnoldmo.org/events](http://www.arnoldmo.org/events).



## Non-Recyclables

There are many benefits to recycling including reducing the amount of waste sent to landfills and incinerators and conserving natural resources. It is important to separate trash and recycling items since unrecyclable items may cause issues in the recycling process.



The following items **DO NOT** belong in the recycling container:

- Plastic Bags & Wrappers
- Clothing & Shoes
- Tools
- Food
- Electronics & Batteries
- Medical Waste
- Soiled Paper
- Styrofoam
- Greasy Pizza Boxes
- Toys
- Construction Waste
- Yard Waste
- Diapers
- Scrap Metal

## Recyclables

The following items **DO** belong in the recycling container:

- Flattened Cardboard
- Paper
- Metal Cans
- Plastic Bottles and Jugs
- Cartons
- Glass



For proper collection, keep all recyclables free of food and liquid and do not put them in containers or bags.

Other recyclables can be taken to recycling centers. Recycling centers offer recycling of appliances, batteries, building materials, corrugated cardboard, electronics, glass, newspapers/magazines, metals (both ferrous and non-ferrous), oil, plastics, steel food cans, tires, and yard waste.

Visit [www.jeffcomo.org/312/Recycling](http://www.jeffcomo.org/312/Recycling) to find your nearest recycling center.